

Transportations (Buses, Train, Ship)



Saemaeul First Class Train



Before



Acourete Paint - Primary Paint



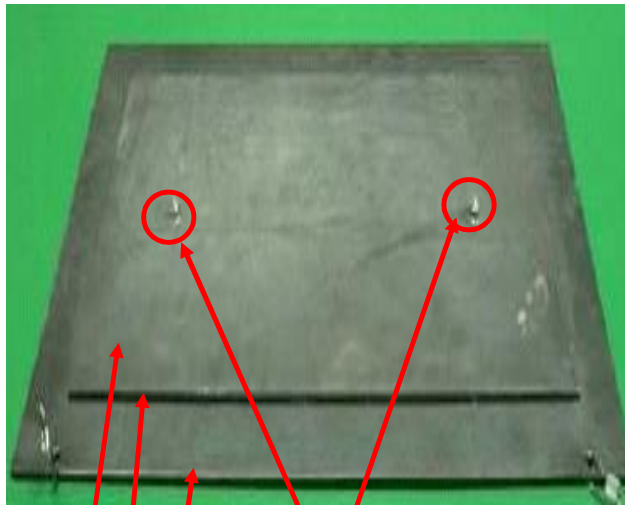
Acourete Fiber



Acourete Fiber - Steel Sheet



Steel Body Noise Control

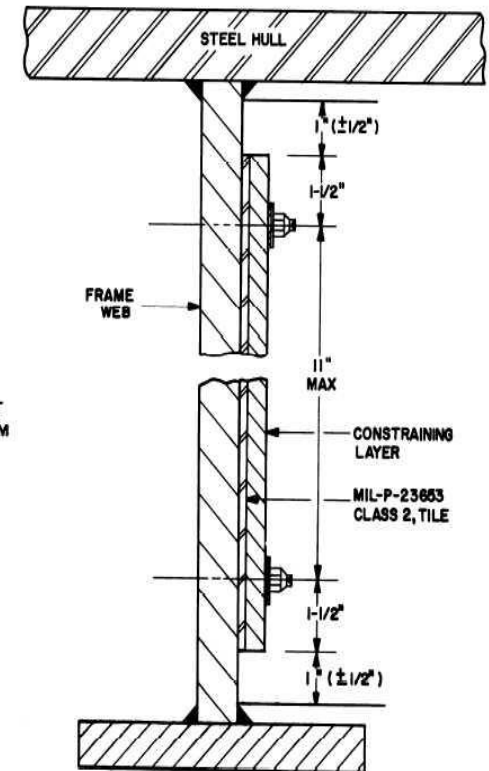
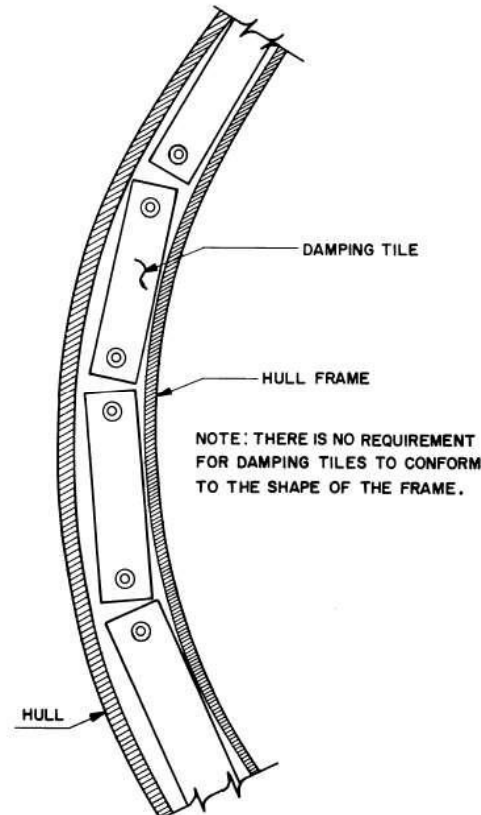


Fixing Bolt

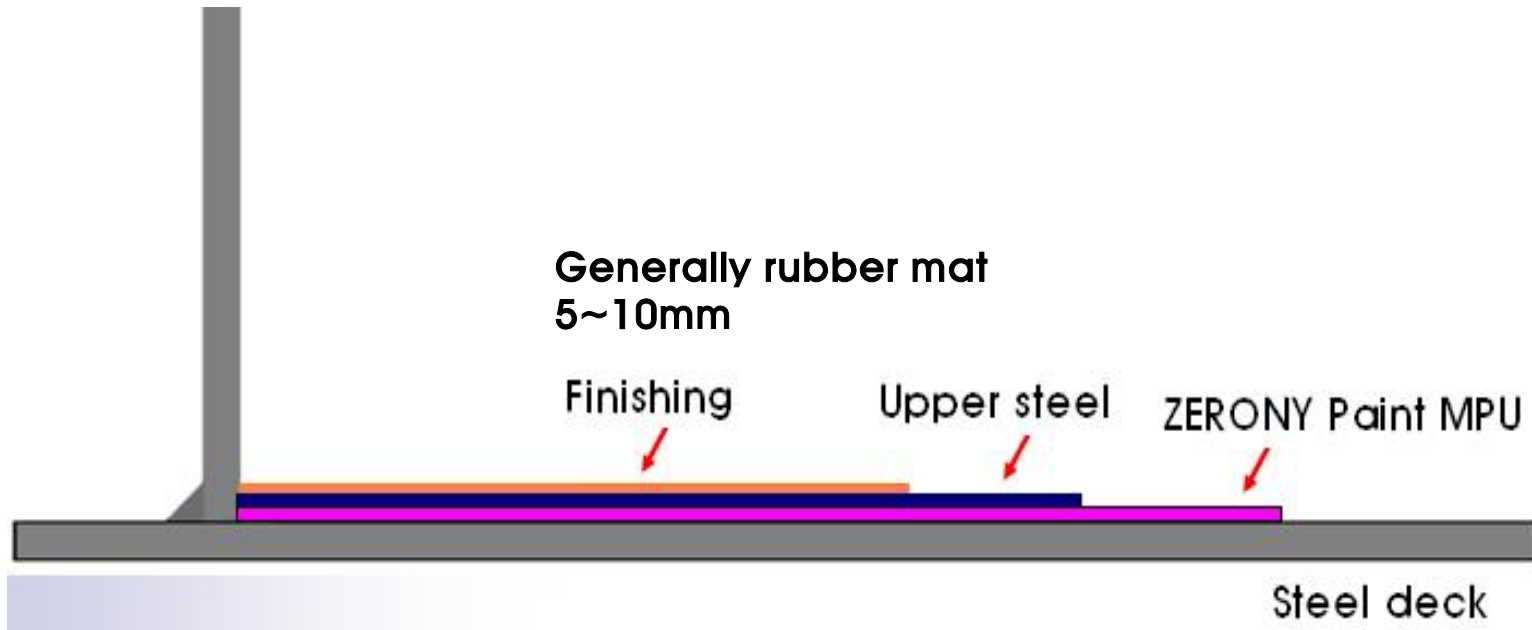
Base plate 6~10mm

Zerony Sheet BRR-F 3mm

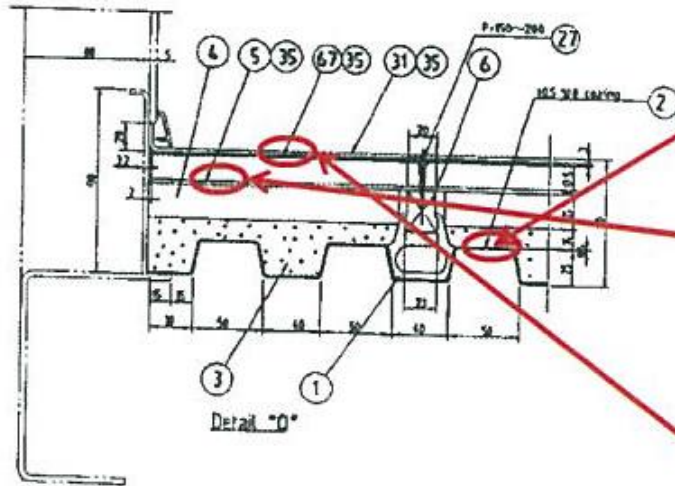
Upper steel plate 2~3mm



Flooring Noise Control

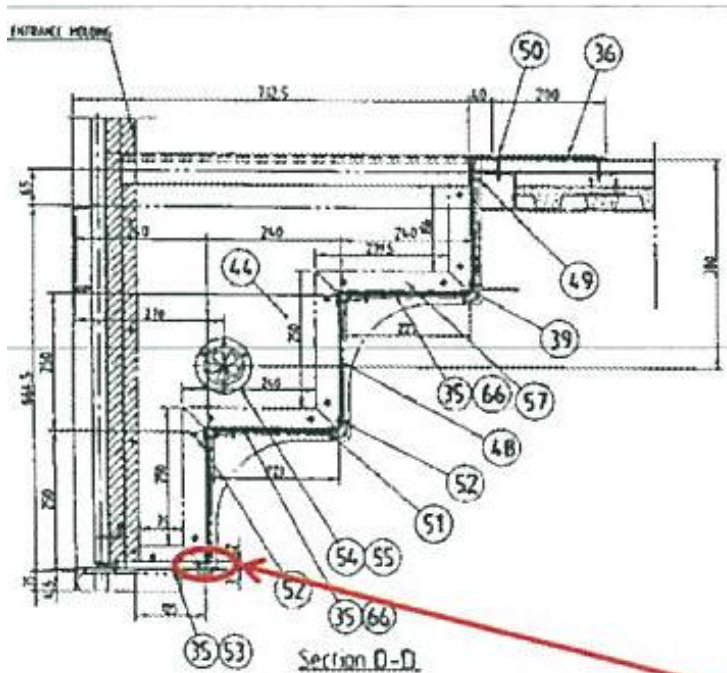


Underfloor



NO.	품명 DESCRIPTION	재질 MATERIAL	비고 REMARKS
2	방음 COATING		T 0.5 ~ 2
3	INSULATION	BITUMINOUS CORK	
5	DAMPING SHEET	ASS'Y	NOVI sheet PS-3 / DFA-G3
31	FLOOR SHEET	VINYL CHLORIDE	T3*350*17000
67	DAMPING SHEET	ASS'Y	NOVI sheet PS-2 / DFA-G2

Doorstep Passenger



NO.	DESCRIPTION	MATERIAL	REMARKS
36	MAT (1)	ASS'Y	
48	FRONT PLATE FOR STEP	ASS'Y	
53	DAMPING SHEET	ASS'Y	T3*T25*995, NOVI sheet PS-3 / DFA- G3
66	DAMPING SHEET	ASS'Y	T3*223*995, NOVI sheet PS-3 / DFA- G3

